

# TOMADAS PARA APARELHOS

## ESPECIFICAÇÕES:

**CARACTERÍSTICAS ELÉTRICAS:** 10A ou 20A em tensões de até 250V~.

Modelos com poço externo ou interno atendem ao padrão brasileiro de plugues e tomadas (NBR 14136).

Produtos Certificados pelo INMETRO no requisito de SEGURANÇA pelo organismo de certificação Bureau Veritas (BV) - OCP0018.

**interruptores para aparelhos**



Referência	Nº de Condutores	Poço
TPA1 - 3	3 (2P+T)	Externo
TPA2 - 3	3 (2P+T)	Interno

**POÇO EXTERNO**

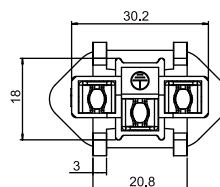
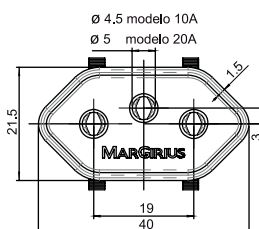
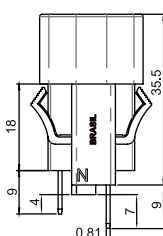
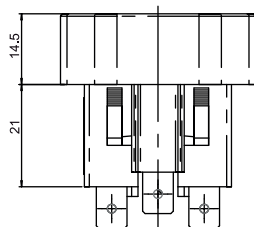


**POÇO INTERNO**

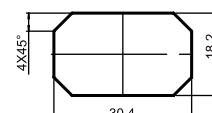


## DIMENSÕES

**POÇO EXTERNO**

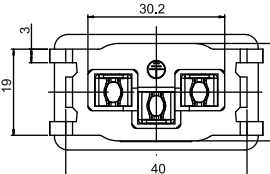
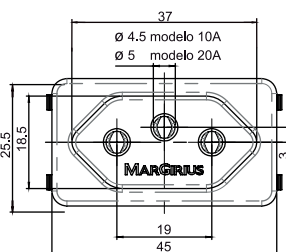
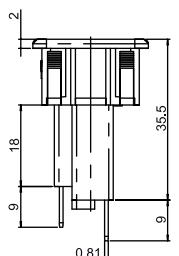
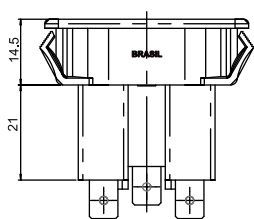


Rasgo para encaixe

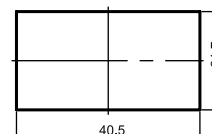


Espessura do painel:  
0,8 a 2mm  
2 a 4mm\*  
\*sob consulta

**POÇO INTERNO**



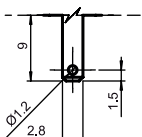
Rasgo para encaixe



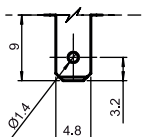
Espessura do painel:  
0,8 a 2mm  
2 a 4mm\*  
\*sob consulta

## TERMINAIS

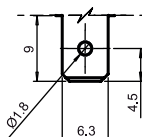
**E1 - Faston**  
2,8 x 0,8mm



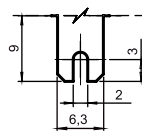
**E2 - Faston**  
4,8 x 0,8mm



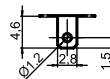
**E3 - Faston**  
6,8 x 0,8mm



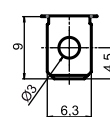
**E4 - Faston c/rasgo**  
6,3 x 0,8mm



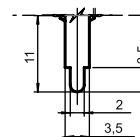
**E5 - Solda**  
2,8 x 0,8mm



**E6 - Solda**  
6,3 x 0,8mm



**CI - Terminal**  
PC



## # - CORES

A - azul  
AC - creme  
B - branco  
C - amarelo  
D - verde  
E - vermelho  
F - preto - (standard)  
G - cinza  
H - marrom

## CONTATOS

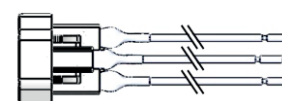
10A  
20A

## BARRA DE CODIFICAÇÃO

TPA     -

Referência	Terminal	Cor	Contatos
TPA1 - 3	E1		10A
TPA2 - 3	E2		20A
	E3		
	E4		
	E5		
	E6		
	CI		
	Cabo		

**Cabo - Rabicho 150mm\***  
3 x 1,5mm<sup>2</sup>



\*Outros comprimentos e bitolas sob consulta