

OUTLETS FOR APPLIANCES

SPECIFICATIONS:

ELECTRICAL CHARACTERISTICS: 10A or 20A in tensions until 250VAC.

Models with external and internal pit. they are in accordance with brazilian standard of plugs and outlets (NBR 14136).

Products Certified by INMETRO required by the SAFETY item of certification body Bureau Veritas (BV) - OCP0018.

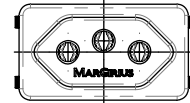


Reference	Number of Conductors	Pit
TPA1 - 3	3 (2P+T)	External
TPA2 - 3	3 (2P+T)	Internal

EXTERNAL PIT

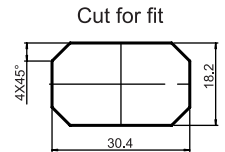
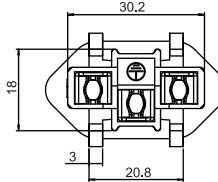
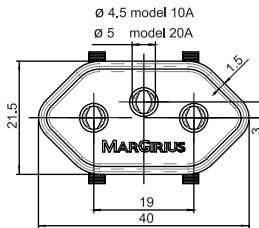
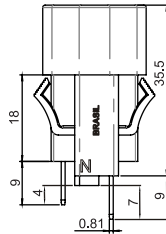
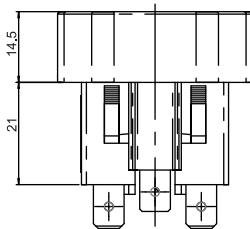


INTERNAL PIT



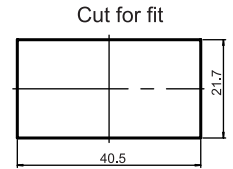
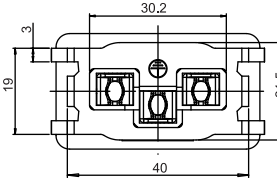
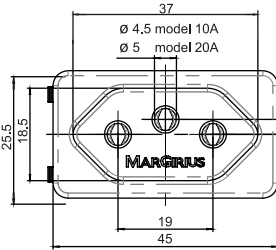
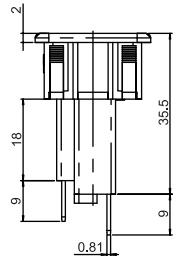
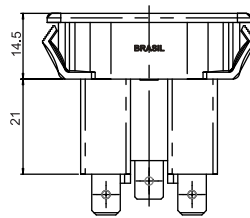
DIMENSIONS

EXTERNAL PIT



Panel thickness:
0,8 to 2mm
2 to 4mm*
*contact us

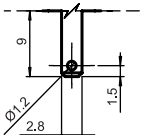
INTERNAL PIT



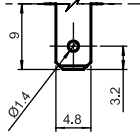
Panel thickness:
0,8 to 2mm
2 to 4mm*
*contact us

TERMINALS

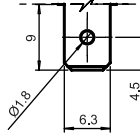
E1 - Faston
2,8 x 0,8mm



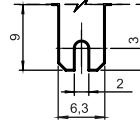
E2 - Faston
4,8 x 0,8mm



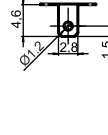
E3 - Faston
6,8 x 0,8mm



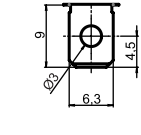
E4 - Faston with cut
6,3 x 0,8mm



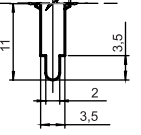
E5 - Solder
2,8 x 0,8mm



E6 - Solder
6,3 x 0,8mm



CI - PC Terminal



- COLORS

A - blue
AC - cream
B - white
C - yellow
D - green
E - red
F - black - (standard)
G - gray
H - brown

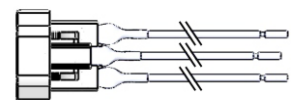
CONTACT

10A
20A

SELECTION GUIDE

Reference	Terminal	Color	Contact
TPA1 - 3	E1		10A
TPA2 - 3	E2		20A
	E3		
	E4		
	E5		
	E6		
	CI		
	Cable		

Cable - Tail 150mm*
3 x 1,5mm²



*Other lenghts contact us