

58.000 SERIES

ROTARY SWITCHES

SPECIFICATIONS:

ELECTRICAL CHARACTERISTICS: 3A with resistive load in 120V~ or 1,5A with resistive load in 250V~.

CONTACT RESISTANCE: maximum of 20 milliohms with 1A DC.

INSULATION RESISTANCE: minimum of 1.000 Megaohms.

DIELECTRIC WITHSTAND: 1.000V(RMS) for 1 minute (minimum).

OPERATION TEMPERATURE: 0°C to 55°C.

Certified product*

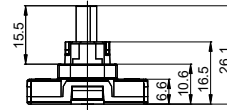
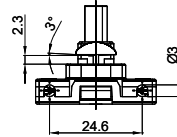
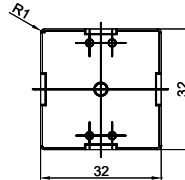


*Call us



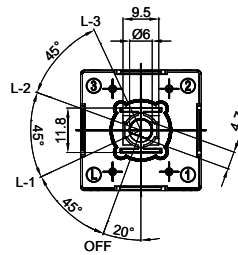
REFERENCE

Reference	Starting position	Quantity of ON positions
58.003	OFF	3



ELECTRICAL SCHEME

Position	Shaft	Circuit
1		OFF
2		L-1
3		L-2
4		L-3

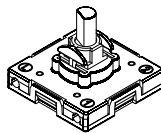


ACTUATOR



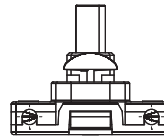
A1

FIXATION



C1- Lock

TERMINAL



E1 - 4 Faston terminals

Electrical cable specifications

Solid wire

Gauge 0,5 to 4,0mm² (maximum)

Stranged wire (tim plated)

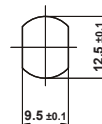
Gauge 0,5 to 4,0mm² (maximum)

CONTACT

B - Standard

3A with resistive load in 120V~ or 1,5A with resistive load in 250V~

FIXING CUT



SELECTION GUIDE



Reference



actuator
A1



fixation
C1



terminal
E1



contact
B