

SERIES 49.000

ROTARY SWITCHES

SPECIFICATIONS:

Characteristics: Switch for grill and ignition of stoves

Contact resistance: maximum of 1 miliohms with application of 1A VCC

Isolation Resistance: minimum of 1000 megaohms

Electrical Withstand: 1000V(RMS) for 1 minute (minimum)

Operation temperature: 0°C to 120°C



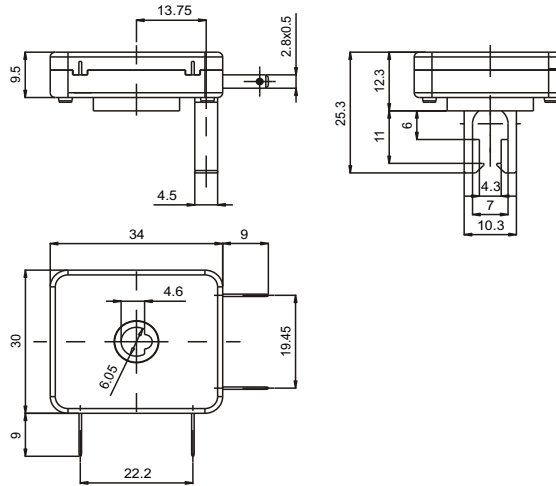
Certified Product*



*Call us

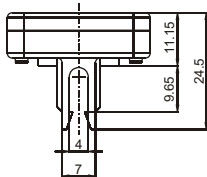
REFERENCE

| Reference | Pos1 | Pos2 | Pos3 |
|-----------|------|----------------------------|-------------|
| 49.103 | OFF | ON IGNITION | ON GRILL |
| 49.123 | OFF | ON IGNITION OR GRILL | - |

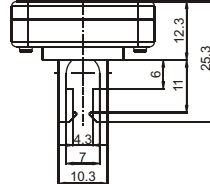


BOX (FIXATION)

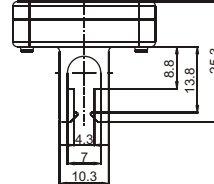
C1



C2

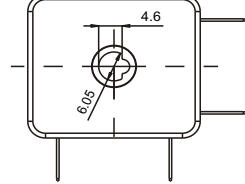


C3



ACTUATOR

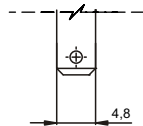
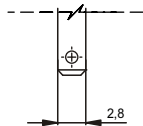
A1



TERMINAL

E1 - Faston 2,8 x 0,5

E2 - Faston 4,8 x 0,5



Note: The terminal E2 is available only for Grill function.

CONTACT

GRILL

B1 - 10A 250VAC

B4 - 16A 250VAC

IGNITION

B2 - 0,25A 250VAC

B3 - B2 + B4

GRILL - 16A 250VAC

IGNITION - 0,25A 250VAC

B5 - B1 + B2

GRILL - 10A 250VAC

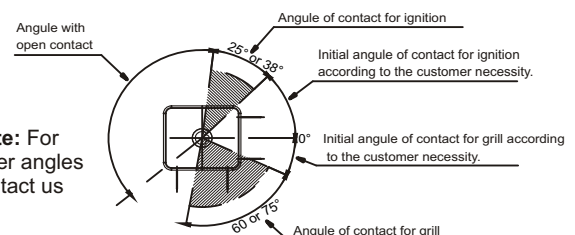
IGNITION - 0,25A 250VAC

SELECTION GUIDE

| | | | | |
|-----------|----------------|----------|----------|----------------------------|
| □□□□□ | □□ | □□ | □□□ | □ |
| Reference | box | actuator | terminal | contact |
| | C1 C2 C3 | A1 | E1 E2 | B1 B2 B3 B4 B5 |

Note: For other models contact us.

ANGLE OF ACTUATION



Note: For other angles contact us