

SET FOR APPLIANCES/ FORNITURE

- Switch with 2P+T outlet.
- Made in thermoplastic material.
- 2P+T Outlet 10A or 20A according to Brazilian Standard (NBR 14136).
- Fixing by screws.
- Cable gauge 0,75mm² (switch and 10A outlet) and 1,5mm² (20A outlet).
- Easy to install.
- Available in white or black colors.

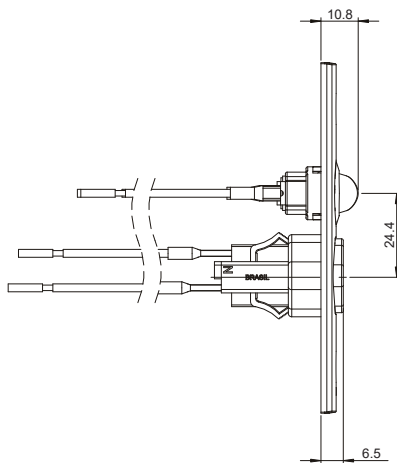
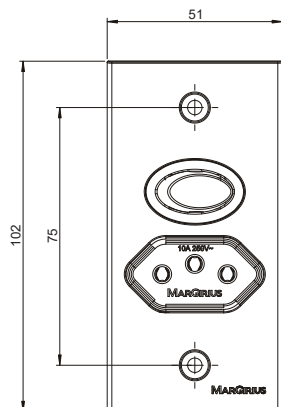


MODELS

Electrical Specifications		
Code	Outlet	Switch
CM1 - 31 (on/off switch)	10A	6A 120V~ ¹ 3A 250V~ ¹
CM2 - 31 (3-way switch)		
CM1 - 32 (on/off switch)	20A	
CM2 - 32 (3-way switch)		

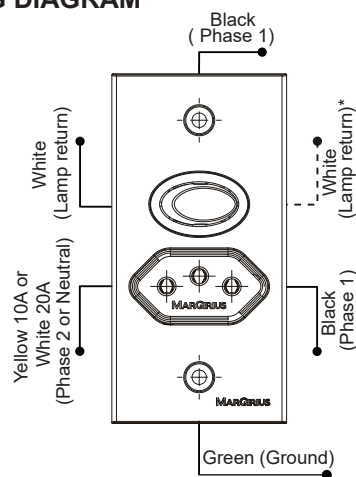
¹ Resistive load.

DIMENSIONS



Cables length: 100mm.

WIRING DIAGRAM

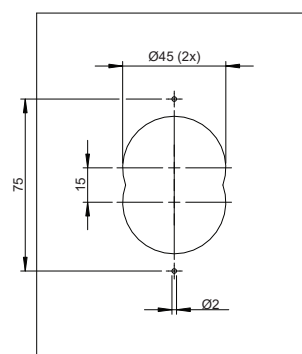


* Available on model with 3-way switch.

MOUNTING INSTRUCTIONS

- Before starting the instalation, ensure that the power is off (circuit breaker off).
- Check the connection diagram.
- For doubts about wiring diagram, consult our technical department.

CUT FOR FIT



SELECTION GUIDE

CM	code	3 outlet 2P+T	color
	1 (on/off switch)	1(10A)	White
	2 (3-way switch)	2(20A)	Black

Note: The cables colors may change without notice. See the instructions on the package before installation. Fixing screws are supplied with the product. Others colors options and cables lenghts on request.