

OUTLETS FOR APPLIANCES

SPECIFICATIONS:

ELECTRICAL CHARACTERISTICS: 10A or 20A in tensions until 250VAC.

Models with external and internal pit.

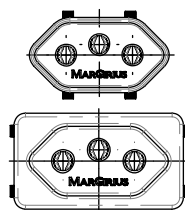
In accordance with brazilian standard of plugs and outlets (NBR 14136).

Products Certified by Bureau Veritas (BV).



Reference	Number of Conductors	Pit
TPA1 - 3	3 (2P+T)	External
TPA2 - 3	3 (2P+T)	Internal

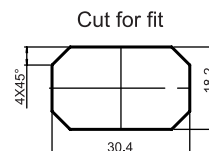
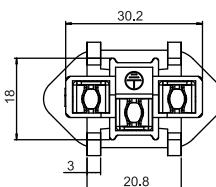
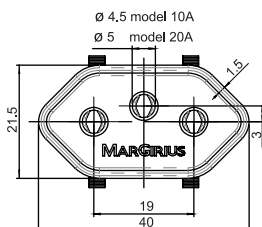
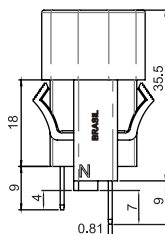
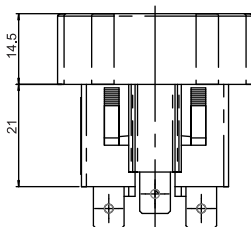
EXTERNAL PIT



INTERNAL PIT

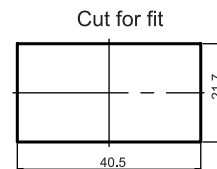
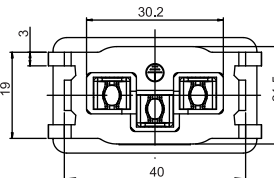
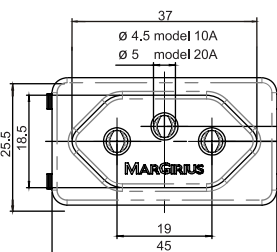
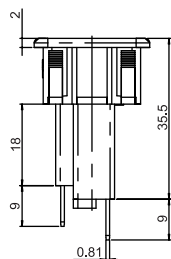
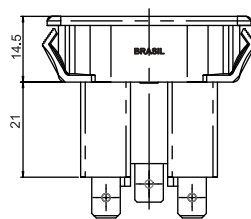
DIMENSIONS

EXTERNAL PIT



Panel thickness:
0,8 to 2mm
2 to 4mm*
*contact us

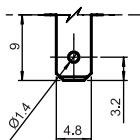
INTERNAL PIT



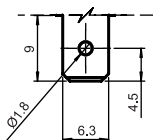
Panel thickness:
0,8 to 2mm
2 to 4mm*
*contact us

TERMINALS

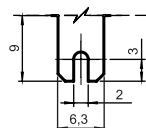
E2* - Faston
4,8 x 0,8mm



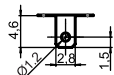
E3 - Faston
6,3 x 0,8mm



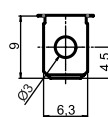
E4 - Faston with cut
6,3 x 0,8mm



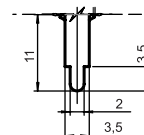
E5 - Soldering
2,8 x 0,8mm



E6 - Soldering
6,3 x 0,8mm



CI - Printed circuit



*E2 terminal only for 10A outlets.

- COLORS

A - blue
AC - cream
B - white
C - yellow
D - green
E - red
F - black - (standard)
G - gray
H - brown

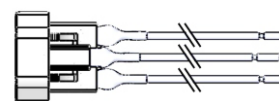
CONTACT

10A
20A

SELECTION GUIDE

Reference	Terminal	Color	Contact
TPA1 - 3	E2		10A
TPA2 - 3	E3		20A
	E4		
	E5		
	E6		
	CI		
	Cable		

Cable - Lenght: 150mm*
3 x 1,5mm²



*Other lenghts contact us