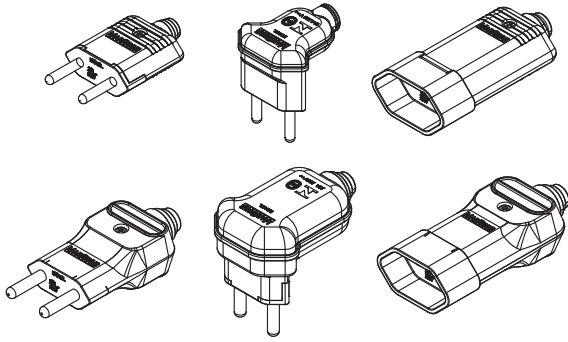


# DESMONTABLE PLUGS OUTLETS 10A AND 20A



## SPECIFICATIONS:

Electrical characteristics: 10A or 20A at voltages up to 250V~.  
Plugs with solid pins with 90° or 180° cable exit.  
Models with screw-adjustable cable glands.  
Cable connection using screw terminals.  
Compliant with the Brazilian standard for plugs and sockets (NBR 14136).  
Products Certified by INMETRO in SAFETY requirements  
by the certification body Bureau Veritas (BV) - OCP0018.

### MODELS WITHOUT CABLE GLAND: for cables with a section (gauge) up to 1.5mm<sup>2</sup>.

Reference	Description	Rated current (A)	Number of conductors
PLD1 - 2	Plug 180°	10	2
PLD1 - 3	Plug 180°	10	3
PLD6 - 2	Plug 90°	10	2
PLD6 - 3	Plug 90°	10	3
TMD1 - 2	Outlet	10	2
TMD1 - 3	Outlet	10	3

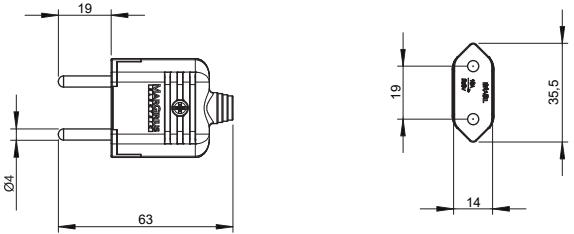
### MODELS WITH CABLE GLAND: for cables with a section (gauge) up to 2.5mm<sup>2</sup>.

Reference	Description	Rated current (A)	Number of conductors
PLD10 - 2	Plug 90°	10	2
PLD10 - 3	Plug 90°	10	3
PLD11 - 2	Plug 180°	10	2
PLD11 - 3	Plug 180°	10	3
PLD12 - 2	Plug 90°	10	2
PLD12 - 3	Plug 90°	10	3
PLD2 - 2	Plug 180°	20	2
PLD2 - 3	Plug 180°	20	3
PLD8 - 2	Plug 90°	20	2
PLD8 - 3	Plug 90°	20	3
PLD13 - 3	Plug 90°	20	3

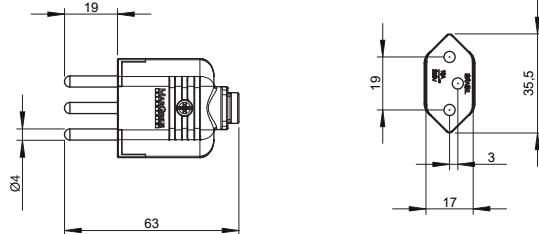
Reference	Description	Rated current (A)	Number of conductors
TMD11 - 2	Outlet 180°	10	2
TMD11 - 3	Outlet 180°	10	3
TMD2 - 2	Outlet 180°	20	2
TMD2 - 3	Outlet 180°	20	3
TMD13 - 3	Outlet 90°	20	3

## DIMENSIONS

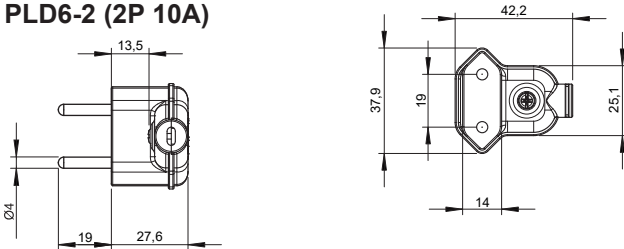
### PLD1-2 (2P 10A)



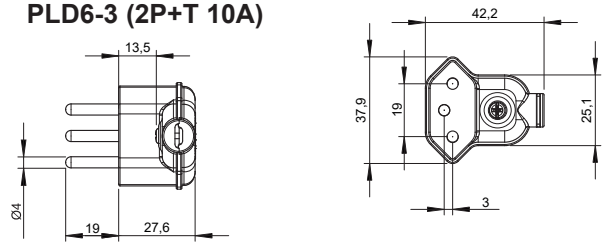
### PLD1-3 (2P+T 10A)



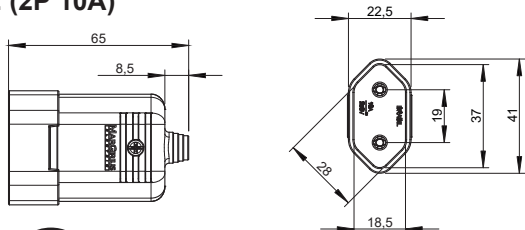
### PLD6-2 (2P 10A)



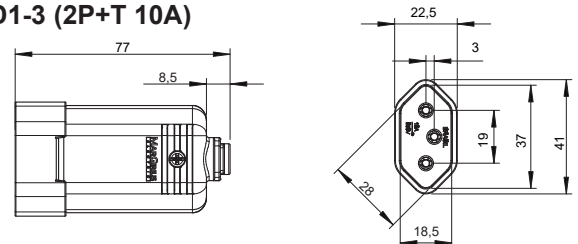
### PLD6-3 (2P+T 10A)



### TMD1-2 (2P 10A)

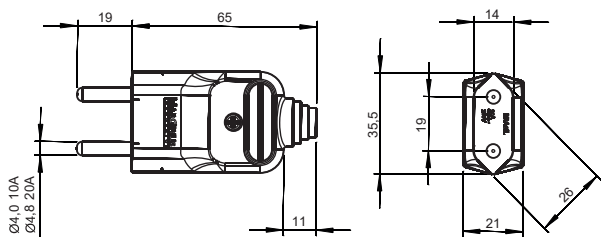


### TMD1-3 (2P+T 10A)

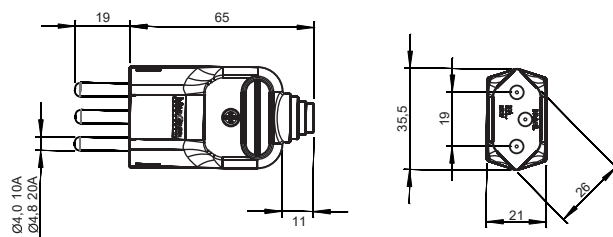


## DIMENSIONS

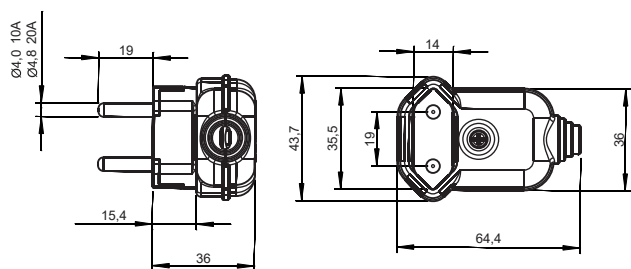
### PLD2-2 (2P 20A) / PLD11-2 (2P 10A)



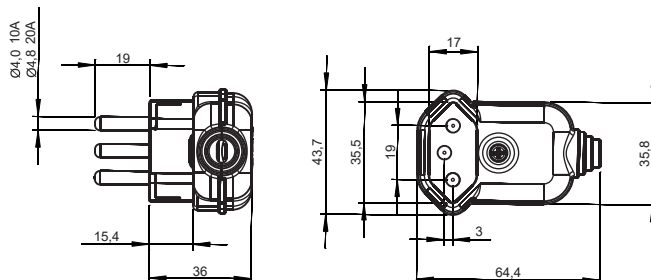
### PLD2-3 (2P+T 20A) / PLD11-3 (2P+T 10A)



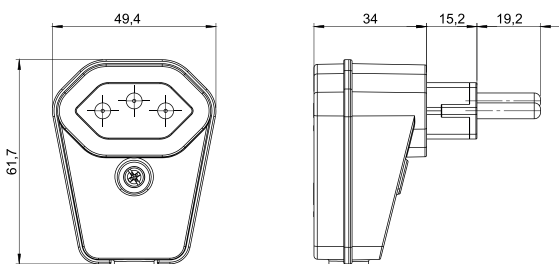
### PLD8-2 (2P 20A) / PLD10-2 (2P 10A)



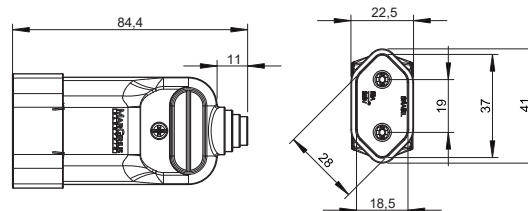
### PLD8-3 (2P+T 20A) / PLD10-3 (2P+T 10A)



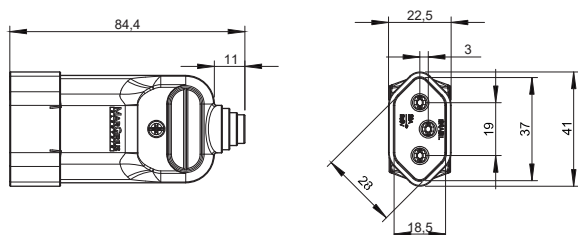
### PLD12 / PLD13



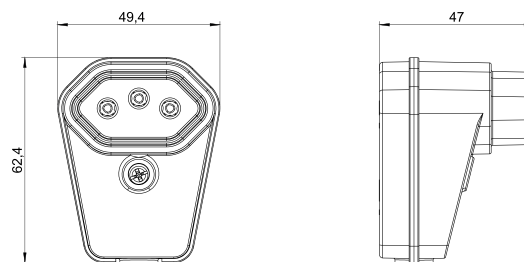
### TMD2-2 (2P 20A) / TMD11-2 (2P 10A)



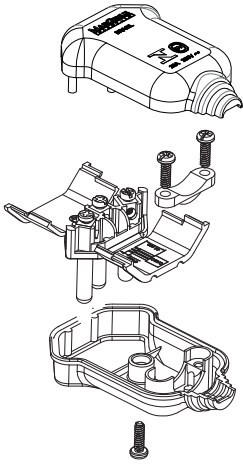
### TMD2-3 (2P+T 20A) / TMD11-3 (2P+T 10A)



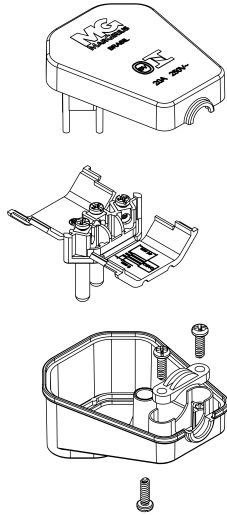
### TMD13



**ASSEMBLY DIAGRAM**  
**PLD8-3**  
**PLD10-3**

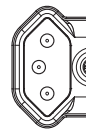


**PLD12-3**  
**PLD13-3**

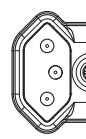


**MOUNTING OPTIONS**  
**PLD8-3 (2P+T)**  
**PLD10-3 (2P+T)**

A) Ground pin on the opposite side the cable output.

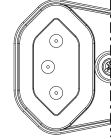


B) Ground pin on cable output side:

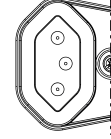


**PLD12-3 (2P+T)**  
**PLD13-3 (2P+T)**

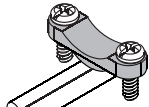
A) Ground pin on the opposite side the cable output.



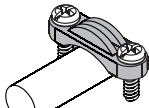
B) Ground pin on cable output side:



**CABLE GLAND ADJUSTMENT MODE\***



Parallel cable or flat PP



Circular PP cable

\*Only for plugs and outlets with cable glands.

**COLORS**

- White
- Gray
- Black

**SELECTION GUIDE (PLUGS)**

PLD	<input type="checkbox"/>	-	<input type="checkbox"/>	<input type="checkbox"/>
Reference	Configuration		Number of conductors	Color
	1		2	
	2		3	
	6			
	8			
	10			
	11			
	12			
	13			

**SELECTION GUIDE (OUTLET)**

TMD	<input type="checkbox"/>	-	<input type="checkbox"/>	<input type="checkbox"/>
Reference	Configuration		Number of conductors	Color
	1		2	
	2		3	
	11			
	13*			

\*90° outlet available only in the 2P+T 20A version.