

# 39.000 SERIES

## TRIGGER SWITCHES

### SPECIFICATIONS:

**ELETRICAL CHARACTERISTICS:** 15A with resistive load  
120/250VCA (Q Contact).

**CONTACT RESISTANCE:** maximum of 20 miliohms with 1A in DC.

**INSULATION RESISTANCE:** minimum of 1.000 megaohms.

**DIELECTRIC WITHSTAND:** 1.000V(RMS) for 1 minute (minimum).

**OPERATION TEMPERATURE:** from 0°C to 55°C.

switches  
for appliances



### REFERENCES

#### SINGLE-POLE

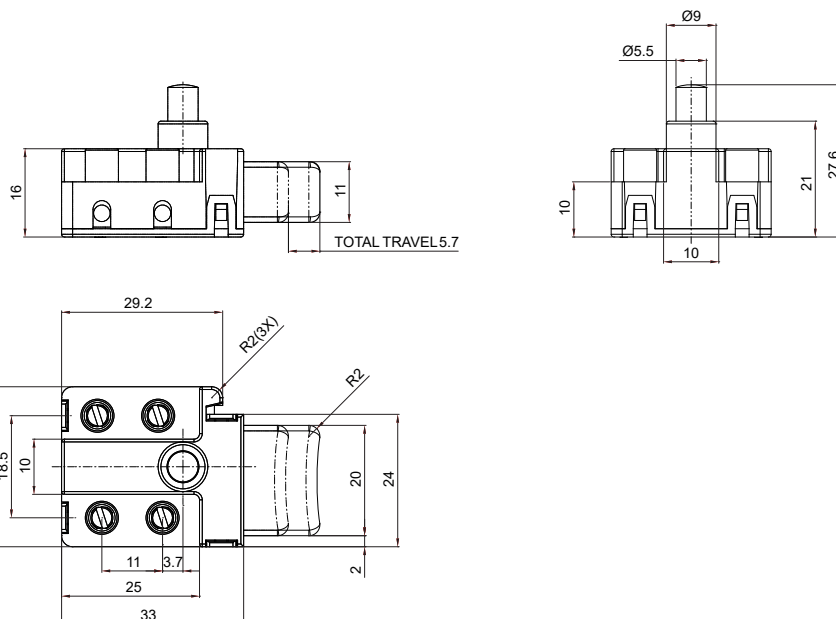
Reference	Position 1	Position 2
39.127	(ON)	OFF

( ) Momentary

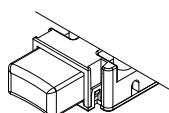
#### DOUBLE-POLE

Reference	Position 1	Position 2
39.227	(ON)	OFF

( ) Momentary

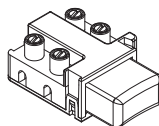


### ACTUADOR

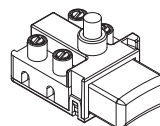


G1# - Trigger

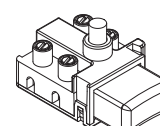
### LOCKS



ST - Without lock

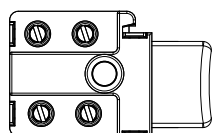


T1# - security lock

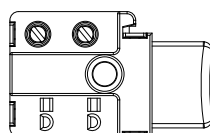


T2# - lock to stay connected

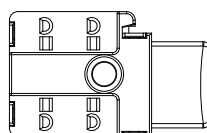
### TERMINALS



P1 - 4 Screw terminals



W1 - 2 Screw terminals  
and 2 Faston terminals



E1 - 4 Faston terminals

### CONTACTS

**S** - Standard

6A with resistive load 120/250V~.

**B**

8A with resistive load 120/250V~.

**Q**

15A with resistive load 120/250V~.

**G**

21A with resistive load 120/250V~. (\*)

Note: (\*) Contact available only for ref. 39.127.

### # - COLORS

**A** - Blue

**D** - Green

**G** - Gray

**B** - White

**E** - Red

**H** - Brown

**C** - Yellow

**F** - Black (standard)

**Note:** Substitute # by the code of request color.

### SELECTION GUIDE



Reference



actuador  
G1#



lock  
ST  
T1#  
T2#



terminal  
P1  
W1  
E1



contact  
S  
B  
Q  
G

**Note:** The ref. 39.127 is available only with lock to stay on (T2), screw terminals (P1) and contact (G).