

Certified Product\*



OCP 0018

IEC 60127-6: Miniature Fuses  
\* Call us

# 11.000 SERIES

## PANEL FUSE HOLDERS

### 11205 REFERENCE

#### SPECIFICATIONS

FUSE TYPE: 5 X 20mm.

ELECTRICAL CHARACTERISTICS: 10A - 110 VAC / 250 VAC.

CONTACT RESISTANCE: maximum of 10 milliohms with 1A DC.

INSULATION RESISTANCE: greater than 1.000 megaohms.

DIELECTRIC WITHSTAND: 1.500 V(RMS) for 1 minute (minimum).

POWER RATING: 2,5W.

OPERATION TEMPERATURE: from 0°C to 55°C.

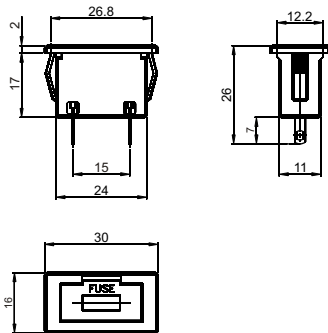
COVER WITH COMPARTMENT FOR FUSE RESERVE



#### REFERENCE

M# - FRAME

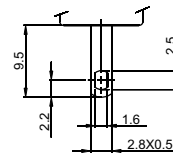
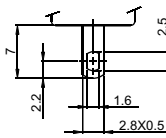
T# - COVER



#### TERMINALS

S1- (Standard)

W1 - 2,8 x 0,5

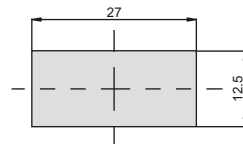


#### # - COLORS

Note: Substitute # by the code of requested color.

- A - blue
- B - white
- C - yellow
- D - green
- E - red
- F - black - (standard)
- G - gray
- H - brown

#### CUT FOR FIT



#### SELECTION GUIDE

11205

Reference

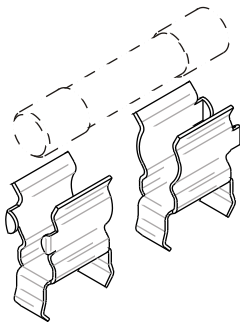
frame  
M#

cover  
T#

terminal  
S1  
W1

OBS.: If you do not choose any terminal code the option S1(standard) will be applied.

Ex.: 11205 MFTE - black frame, red cover and terminal S1.



#### FUSE CLIP

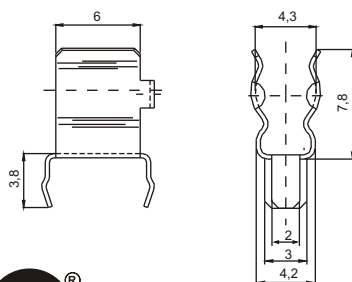
11155 / M REFERENCE

#### SPECIFICATIONS

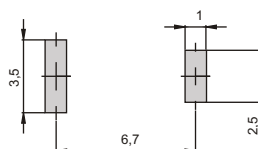
FUSE TYPE: 5 X 20mm.

ELECTRICAL CHARACTERISTICS: 10A - 110 VAC / 250 VAC.

CONTACT RESISTANCE: maximum of 10 milliohms with 1 DC.



#### CUT FOR FIT



#### SELECTION GUIDE

11155 / M  
Reference

Note: This product is shaped by 2 metallic independent pieces.