

TOMADAS PARA APARELHOS

ESPECIFICAÇÕES:

CARACTERÍSTICAS ELÉTRICAS: 10A ou 20A em tensões de até 250V~.

MODELOS COM POÇO EXTERNO OU INTERNO.

ATENDEM AO PADRÃO BRASILEIRO DE PLUGUES E TOMADAS (NBR 14136).

interruptores para aparelhos



Segurança



Referência	Nº de Condutores	Poço
TPA1 - 3	3 (2P+T)	Externo
TPA2 - 3	3 (2P+T)	Interno

POÇO EXTERNO

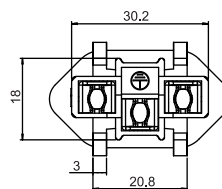
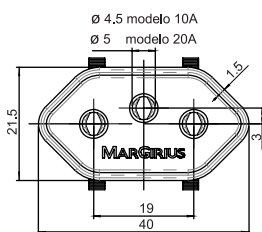
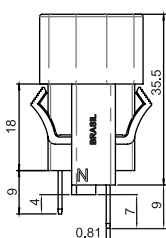
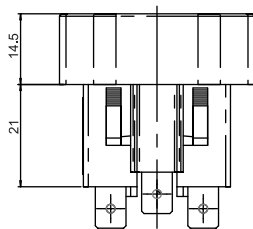


POÇO INTERNO

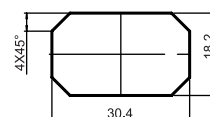


DIMENSÕES

POÇO EXTERNO

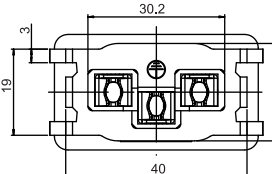
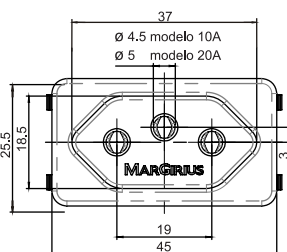
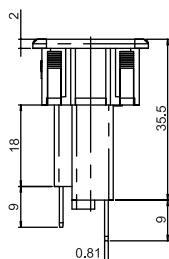
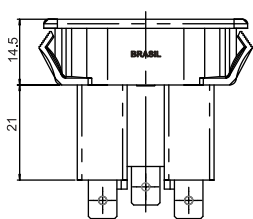


Rasgo para encaixe

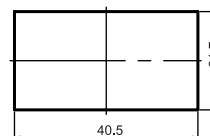


Espessura do painel:
0,8 a 2mm
2 a 4mm*
*sob consulta

POÇO INTERNO



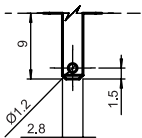
Rasgo para encaixe



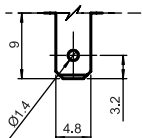
Espessura do painel:
0,8 a 2mm
2 a 4mm*
*sob consulta

TERMINAIS

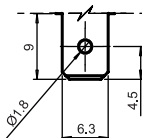
E1 - Faston
2,8 x 0,8mm



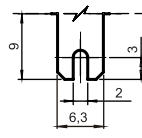
E2 - Faston
4,8 x 0,8mm



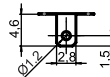
E3 - Faston
6,8 x 0,8mm



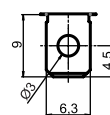
E4 - Faston c/rasgo
6,3 x 0,8mm



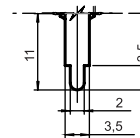
E5 - Solda
2,8 x 0,8mm



E6 - Solda
6,3 x 0,8mm



CI - Terminal
PC



- CORES

A - azul
AC - creme
B - branco
C - amarelo
D - verde
E - vermelho
F - preto - (standard)
G - cinza
H - marrom

CONTATOS

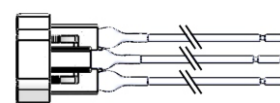
10A
20A

BARRA DE CODIFICAÇÃO

TPA -

Referência	Terminal	Cor	Contatos
TPA1 - 3	E1		10A
TPA2 - 3	E2		20A
	E3		
	E4		
	E5		
	E6		
	CI		
	Cabo		

Cabo - Rabicho 150mm*
3 x 1,5mm²



*Outros comprimentos e bitolas sob consulta