

# 20.200 SERIE

## ROCKERS SWITCHES

### SPECIFICATIONS:

**ELETRICAL CHARACTERISTICS:** 15A with resistive load 120VAC or 10A with resistive load 250VAC (Q Contact).  
**CONTACT RESISTANCE:** maximum of 20 miliohms with 1A in DC.  
**INSULATION RESISTANCE:** minimum of 1.000 megahms.  
**DIELECTRIC WITHSTAND:** 1.000V(RMS) for 1 minute (minimum).  
**OPERATION TEMPERATURE:** from 0°C to 55°C.



### REFERENCE

#### UNIPOLE

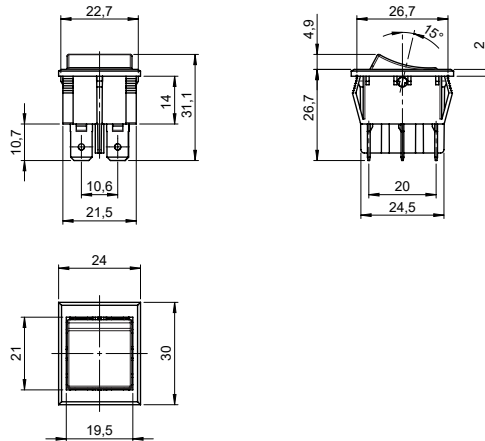
Reference		
20.101	ON	ON
20.108	ON	(ON)
20.123	ON	OFF
20.127	(ON)	OFF

( ) Momentary

#### BIPOLE

Reference		
20.201	ON	ON
20.208	ON	(ON)
20.223	ON	OFF
20.227	(ON)	OFF

( ) Momentary

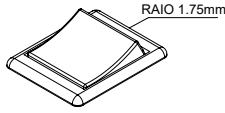
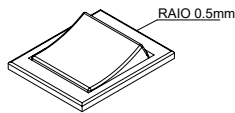
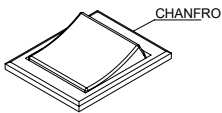


### FRAMES

M2# - standard

M3#

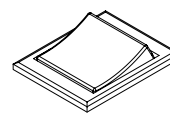
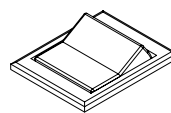
M5#



### ACTUATORS

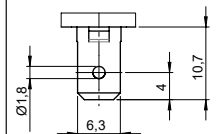
T3#

T4# - standard



### TERMINAL

E3 - faston 6,3 x 0,8



### CONTACT

**S** - Standard  
 6A with resistive load 120VAC  
 3A with resistive load 250VAC

**B**  
 10A with resistive load 120VAC  
 6A with resistive load 250VAC

**Q**  
 15A with resistive load 120VAC  
 10A with resistive load 250VAC

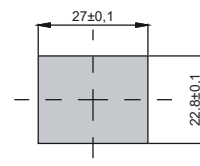
**G**  
 20A with resistive load 120VAC  
 15A with resistive load 250VAC

### # - COLORS

- A - Blue
- B - White
- C - Yellow
- D - Green
- E - Red
- F - Black (standard)
- G - Gray
- H - Brown

**Note:** Substitute # by the code of request color.

### CUT FOR FIT



Minimum panel tickness - 0,60 ±0,1mm  
 Maximum panel tickness - 3,90 ±0,1mm

### SELECTION GUIDE



Reference



frame  
 M2#  
 M3#  
 M5#



actuator  
 T3#  
 T4#



terminal  
 E3



contact  
 S  
 B  
 Q  
 G

**Note:** If you do not substitute the symbol # by the code color, it will imply the standard black color F.

